

Prof. M. N. Navale

M.E. (Elec.), MIE, MBA
FOUNDER - PRESIDENT

Dr. (Mrs.) Sunanda M. Navale

B.A., MPM, Ph.D.
FOUNDER - SECRETARY

Dr. Sopan R. Ivare

B.Sc. L.L.M, Ph.D. (Law)
PRINCIPAL

7.1.7 The Institution has disabled-friendly, barrier free environment

1. Built environment with ramps/lifts for easy access to classrooms


- We have provided a Ramp for easy access in the main entrance of the college.
- This helps the any disabled to lead the class rooms

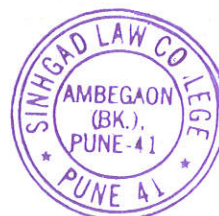


Ramp



Wheel Chair


PRINCIPAL
SINHGAD LAW COLLEGE
S.No.10/1, Ambegaon (Bk.)
Pune - 411041





Sinhgad Institutes

SINHGAD TECHNICAL EDUCATION SOCIETY'S

SINHGAD LAW COLLEGE

Approved by Bar Council of India, Recognized by Govt. of Maharashtra and
Affiliated to Savitribai Phule Pune University

(Regd. No. MAH/7199-93/Pune dt. 6/7/93 & F-8282/Pune dt. 12/8/93)
S. No.10/1, Ambegaon (Bk.), Pune - 411 041.

Tel. : 020 - 2435 0595
Tel. : 020 - 2435 4770

ID No. : PU/PN/LAW/188/2003

E-mail: principal_slc@sinhgad.edu
Website: www.sinhgad.edu

Prof. M. N. Navale

M.E. (Elec.), MIE, MBA
FOUNDER - PRESIDENT

Dr. (Mrs.) Sunanda M. Navale

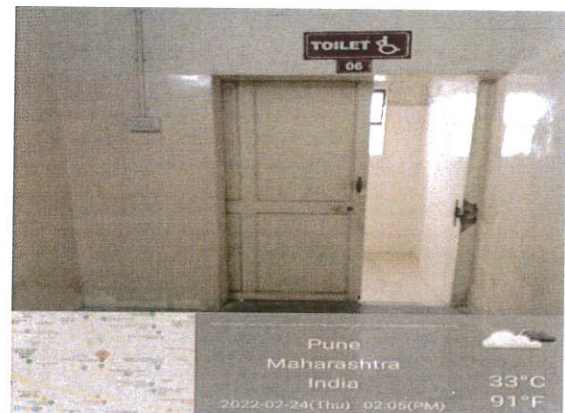
B.A., MPM, Ph.D.
FOUNDER - SECRETARY

Dr. Sopan R. Ivare

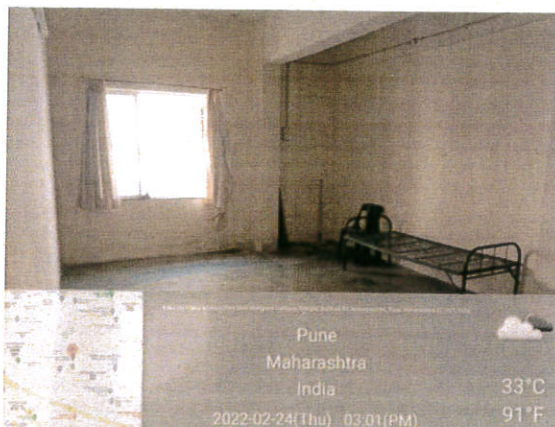
B.Sc. L.L.M., Ph.D. (Law)
PRINCIPAL

2. Disabled-friendly washrooms

- We have a special provision of washroom in the college.
- This washroom is easily accessible to the any handicap Person.
- This washroom is embedding with separate washbasin with special tactical pathway.



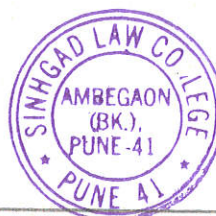
Washroom



Rest Room

Common Room

PRINCIPAL
SINHGAD LAW COLLEGE
S.No.10/1, Ambegaon (Bk.)
Pune - 411041



Regd. Office: S. No. 44/1, Vadgaon (Bk.), Off. Sinhgad Road, Pune - 411 041.

Telefax: (020) 2435 4770 E-mail: stes@sinhgad.edu Web: www.sinhgad.edu

3. Facility of Lift

- Elevators installed in the building that makes it easier for people with disabilities to navigate floors.
- They are especially helpful for people who need assistance going up and down.



Lift



Lift

4. Signage including tactile path, lights, display boards and signposts

- All signage are posted in the entire campus of the Institution.
- This helps and leads the different disabled
- Students to lead the access in the campus which are assisted by the security at across campus.



Signpost